

# Safe and Smart Power Program

Demand Management Community Education Program

Final Community Report July 2013



**Government of South Australia**

Department of the Premier and Cabinet  
Aboriginal Affairs and Reconciliation Division

**BUSHLIGHT**  
Centre for Appropriate Technology



# Special Thanks

Bushlight would like to specially thank all the Anangu people that allowed us to come into their communities, talked with us about power and are already doing their best to save power. Thank you to all the great interpreters working for their communities in the APY lands that helped us with more than language. Thank you to Community chairs and members of the APY executive who took time to speak with us.

## Who is Bushlight?

Bushlight is part of the Centre for Appropriate Technology (CAT); a 30-year old national Indigenous science and technology organisation with a head office in Alice Springs. CAT is controlled by an Indigenous Board.

Bushlight was established in 2002, and for the past 10 years has worked with remote Indigenous communities in the fields of demand management, community engagement & training, renewable energy system design, installation, maintenance and energy efficiency. Bushlight has developed and delivered sustainable energy projects to more than 400 individual households in 130 Indigenous communities across Central and Northern Australia.

All Bushlight programs have participatory engagement and technical innovation at their core.

All Bushlight programs are based on talking to people and learning about power and people in each community.



# The Safe and Smart Power Program

Since October 2012, Bushlight has run a project in remote communities in the Anangu Pitjantjatjara Yankunytjatjara lands, Maralinga Tjarutja lands and further south in Yalata in South Australia. The project was about understanding how power is being used in people's homes and to provide some good information to communities on how to use less power and how to use it safely. It has been called the Demand Management Community Education Program.

The project comes from the South Australian Government, Department of the Premier and Cabinet, Aboriginal Affairs and Reconciliation Division (DPC-AARD). The Government asked Bushlight to write a report about power in the communities and how to best manage the need for power in the future. The demand, or amount of power, needed for the region is going up every year and it costs the Government a lot of money to run the power generators.

As the Anangu Papertracker reported, last financial year there was 3.75 million litres of diesel used to power the communities in the region. The Government is looking at ways to keep supplying power for the region and to use less diesel to do it.

## What Bushlight did on the Program

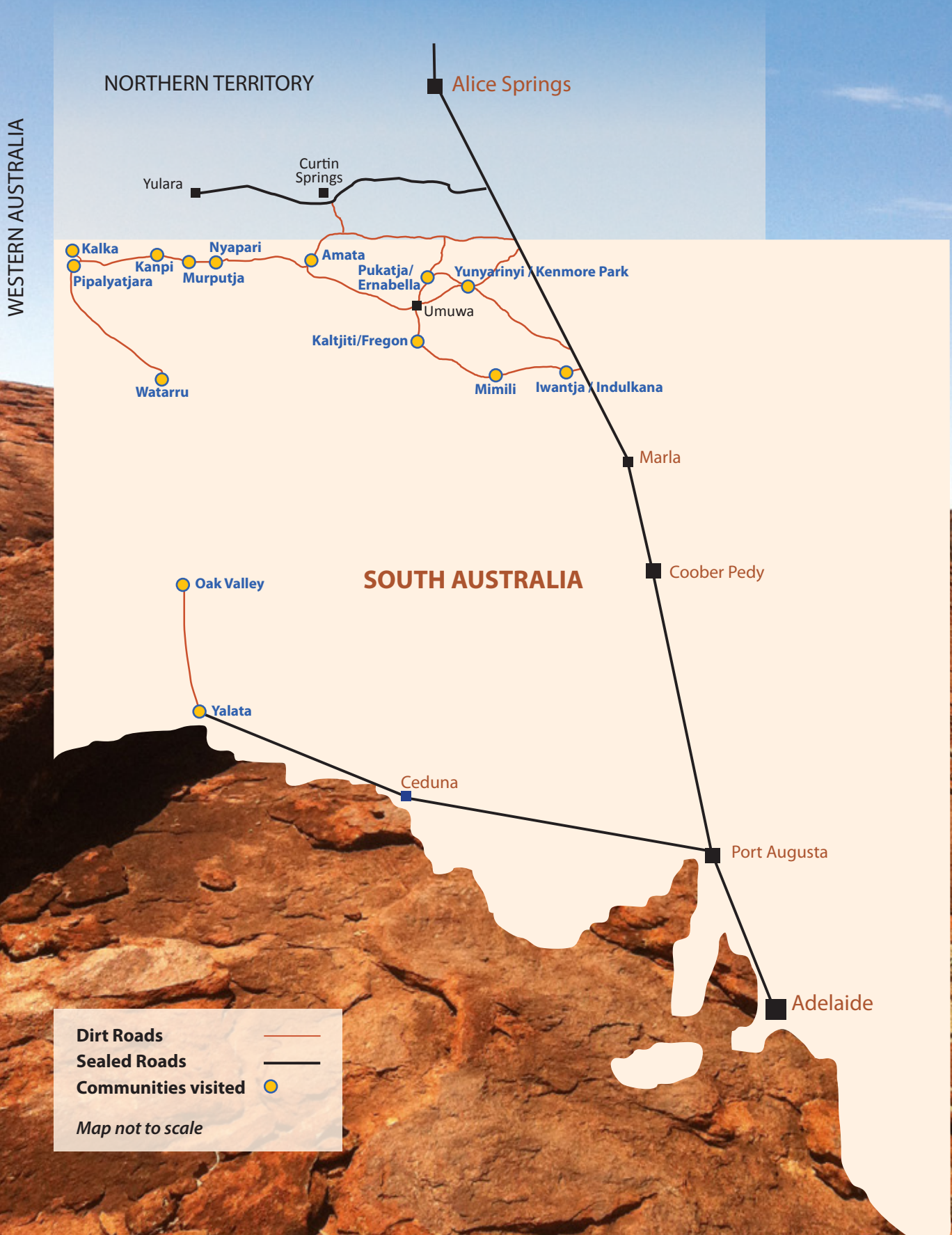
Bushlight went to the APY Executive meeting in February 2013 for permission from the Board to travel to communities for this work. We let communities know that we were visiting and we stayed away if it was a bad time (like sorry business). When we got to a community Bushlight met the Chair of the community to check it was OK to work in the community. Bushlight travelled through most communities during March and April 2013 and visited Oak Valley and Yalata in December 2012 as well.

As well as talking to people, Bushlight did research both from Alice Springs and in one community where we interviewed residents and looked at power information from the houses that shows how much and when power is used. We made sure we got households permission for all of this work.





# Anangu Pitjantjatjara Yankunytjatjara Communities Demand Management Community Education Program







Bushlight travelled to remote SA communities to talk to Anangu about power. We worked with interpreters, like Mary Anderson from Finke and other local interpreters. You might have seen Bushlight in your community running a BBQ and information stall or a meeting on safe use of power in the home and listening to Anangu ideas on how to use less power.

Bushlight wanted to know more about:

- How power is being used in people's homes
- Stories about power
- Problems that Anangu and Piranpa have with power

You might have read about Bushlight from posters and flyers we sent to communities before our visit and also from stories about power on the radio.

## About this report

This report is for people from the communities that talked with us and for Community and Land Councils. This report is a short version of the Government report. It includes information on the posters and booklets Bushlight used and what we have found out about power use in homes.

We hope the report will help people in communities make decisions about how they use power, and will help Government make decisions about how they supply power into the future.

Power used in Anangu community houses is one piece of the total demand for power in the APY lands. There needs to be work done with everyone; Piranpa homes, buildings and facilities in the community like stores, schools, art centres and PY Ku offices so everyone works to use less power.

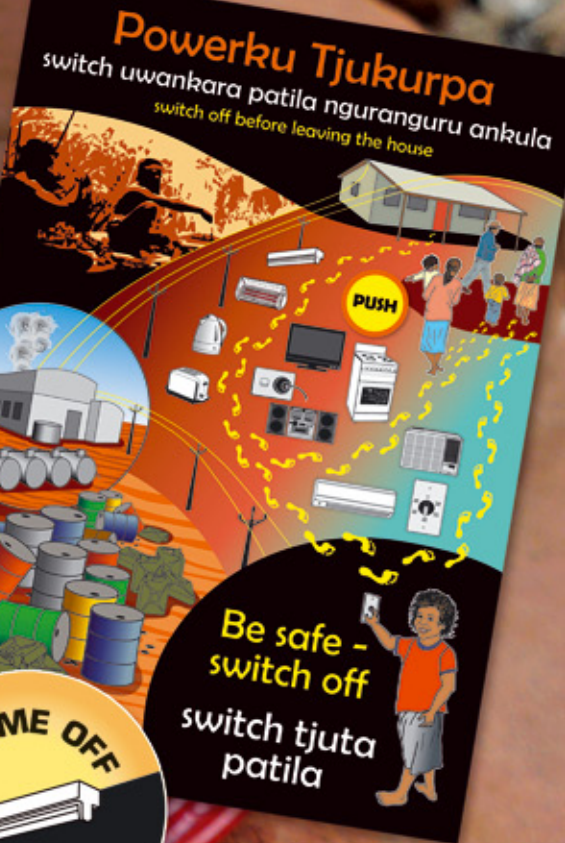


# Educational resources to be safe and smart with Power

As Bushlight travelled through the APY region talking to people, we used lots of books and posters that had been made with Anangu interpreters. The resources were about supporting people to be safe with power and to use less power. Radio stories in language have been made to spread the message about switching off lights, stoves and other appliances when leaving home to save power and to keep the house safe.



switch tjuta patila  
Be safe  
switch off



Be safe -  
switch off  
switch tjuta  
patila

Power can be Dangerous



If there is an electrical problem tell  
your housing officer straight away -  
POWER CAN BE DANGEROUS

Keeping the house cool...

Just one swampy (evaporative air con) can cool the whole house.  
They use less power to run than having  
"box" air con in every room.  
Swampy draws water into a cooling pad  
(full of straw) which becomes wet.  
Warm air from outside through the wet pad  
is cooled and then the air and the  
water is pumped into each room  
through the air vents.



Turn off all aircon switch  
when you leave the house



Shade the  
house where  
the sun hits.  
It keeps the  
house cool.





## Power Safety Message

English  
**Pitjantjatjara**

Power can be dangerous.

*Power kura pampuntja wiyangku wantima.*

Don't cut an appliance cord. It can kill you.

*Wiya kuntantjaku waya wanka heaternguru munu punu kutjupanguru.*

Be careful of ovens. Don't use your oven to heat your house. It is dangerous! It can cause fires!

*Purkarari oventa, utjumilanytja wiya ngura unytjunpa kanyinytjikitja. Nyangatja kura! Ngura kampapai!*

Kids and power are dangerous. Parents tell children. Don't let kids play with power points.

*Tjitjingka wangka. tjitjingku wiya punu munu waya tjarpatjunkuntjaku power (socket) alangka.*

Be careful of heaters. Tell your kids to leave them alone. Turn them off when you leave the room.

*Purkarari heater utjumilara. Tjitji wangka heaterngku kampapai. Patila rumanguru ankula.*

Keep appliances and cords away from water. It can kill you.

*Waya munu cord tjuta kapingka tjunkuntja wiya. Nyangku ilutanykupai.*

If you have problems with the power, be careful! Tell the Housing Officer straight away.

*Problem ngaranyangka electricityangka, purkarari!! Mapalku wangka nyuntumpa Housing Officerangka.*

## Home Power Story – Turn switches off before leaving the house

### **Powerku Tjukurpa-switch uwankara patila nguranguru ankula**

In the old days, the Anangu tended took care of the fire before leaving camp. This stopped the fire from spreading. This is an important story.

*Nyangatja Tjukurpa pulka mulapa. Iriti Anangungku waru wirura wantikatipai kulira panya nguru tjuta kampapiangkatawara .*

If you are leaving home or thinking of leaving home it is important to tend the house before you leave. Kids can remember this too.

*Nguranguru ankula ngura nyuntumpa wirura paranyakula wantikati. Tjitjingku kulu nyangatja kulintjaku. Before you leave, stop- ankunyitjikitjangu, nyangatja kulila.*

- Turn off appliance switches at the power point – *boardangka ngaranyangka patila (TV, Microwave, Kettle, Radio, Toaster)-switch*
- Turn off the heater – *heater patila*
- Turn off the air con – *(Air con) walpa wari patila*
- Turn off all the lights – *tili tutja patila*
- Check that the oven is off – *nyawa oven kulu munu patila*

Heaters and ovens are dangerous and can cause a big fire. If you leave them turned on and leave the house they can make a big fire and burn down your house.

*Nyuntu nguranguru ankula kulia panya heater munu oven ala wantikatinyangka ngura kampapai.*

Power is made from big generators in the community. Power generators use diesel like cars. The power generators send power through the lines to many homes.

*Power generator pulkangu palyani communityngka. Power generatorngku utjumilanyi Diesel mutuka nguwanu. Ka power generatorngku iyani power waya tjutawanu ngura tjutakutu.*

Appliances, air con and lights are greedy for power. If you leave them on when you're not using them they waste power and diesel.

*Ka ngura nyuntumpangka walpa wari munu tili munu punu panya kutjupa tjuta manyu mulapa powerku. Ka nguranguru ankula switch uwankara patila.*

This is like leaving a car running with no one in it. The car wastes diesel.

*Nyangatja mutuka nyuntumpa nguwanpa munturtjungkula wantini driver munu Anangu wiyangku. Ka mutukangu pulkara utjumilanyi diesel.*

Be safe & save diesel

*Wankaru nyinama munu kulinma diesel purkarangu utjumilantjikitja.*

Turn off switches when you leave your house.

*Nyuntu nguranguru ankula switch tjuta patila.*

## Findings: What people said is important about power

People, Anangu and Piranpa all have different thoughts on what is important about power and Bushlight was not able to talk to everyone in the region. But these are some important things that people spoke to us about.

Many people say that money is paid for their power from rent but this doesn't happen anymore. All of the rent taken goes towards maintaining houses. Now the government is paying for the power.

This is the only group of communities in Australia, where people aren't paying for power. People in Alice Springs, other parts of NT, WA and QLD are paying for power usually with power cards.

In talking to Anangu, people have said that they are worried about their appliances (like stoves and air conditioners) in the home, they are unsafe or they are broken and not working properly. Housing SA looks after houses in the APY region and it is best to talk to them as soon as there is a problem.

When talking about being safe with power, most people are worried about their kids being safe. Families already keep an eye on kids and tell them not to touch power points or play with anything that might be dangerous.

Power generation has changed from community power stations in some communities to the Central Power-house. Some people prefer the new way, other people prefer the old way when it was in the community.

Many people are thinking that payment for power, by power cards or some other way might be coming in soon. People wonder what the story is or feel confused or worried. This will be a decision that needs to come from the South Australia Government. They haven't decided yet.

Many Anangu have visit family in NT, WA and in Adelaide and have seen family pay for power either with power cards or by paying bills and have learnt and heard ways to save power from family.

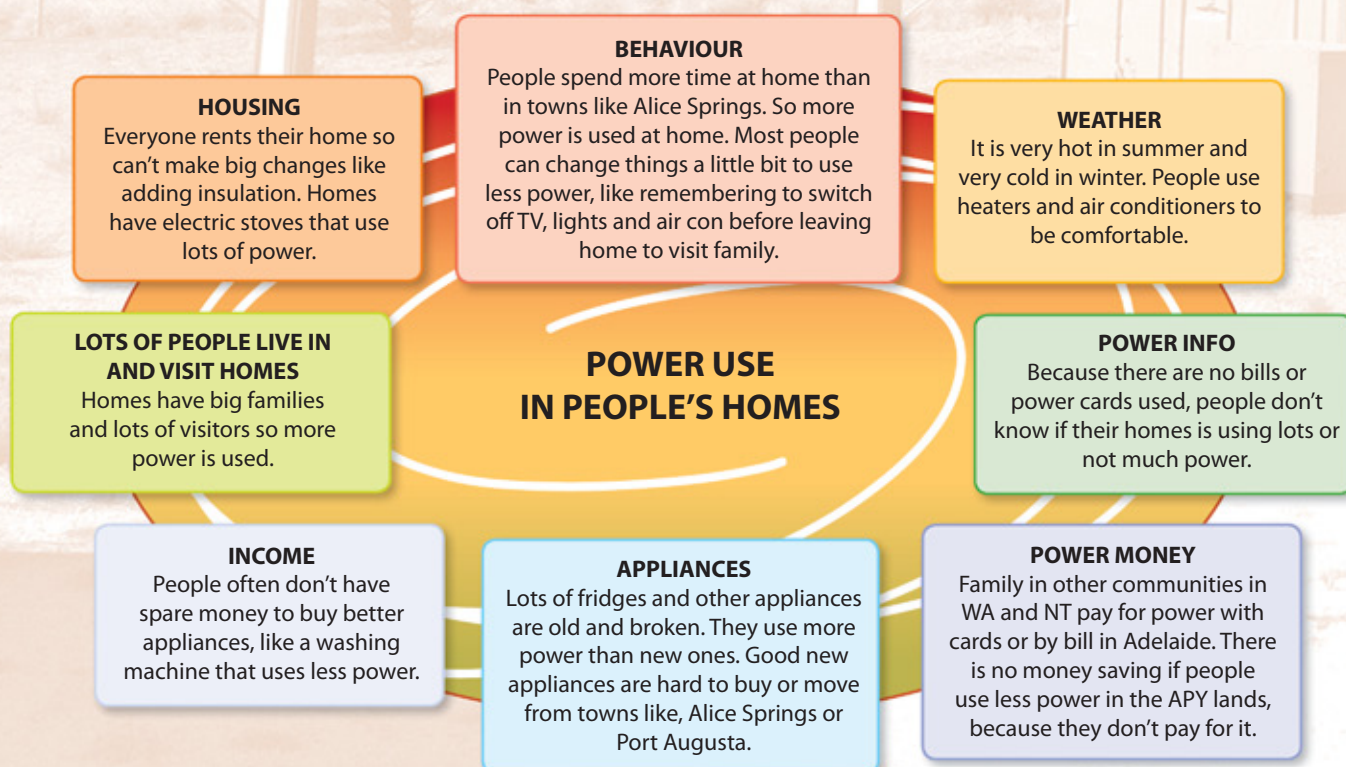
Many people in communities feel that it is important for everyone to be involved when talking about power and talking about homes.

Some people are interested in other ways of making power and know of solar power systems in the APY lands. They are not being used at the moment.

People are already doing good work in saving power. It is important that everyone; Anangu, Piranpa, homes, stores, offices, clinics, schools and art centres all work together to use less power.

## Findings: What we learned about power use in homes

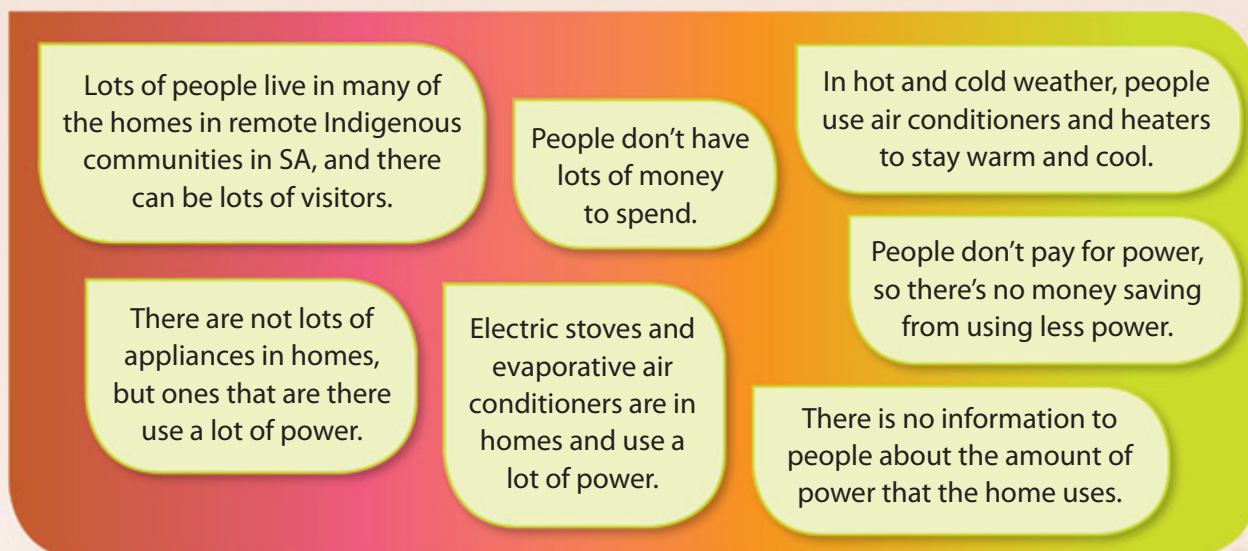
Bushlight has found most homes, Anangu and Piranpa, use a lot of power in the APY lands. There are many reasons why power use could be high.





## Bushlight learnt some important things about power use in people's homes.

### These things are:

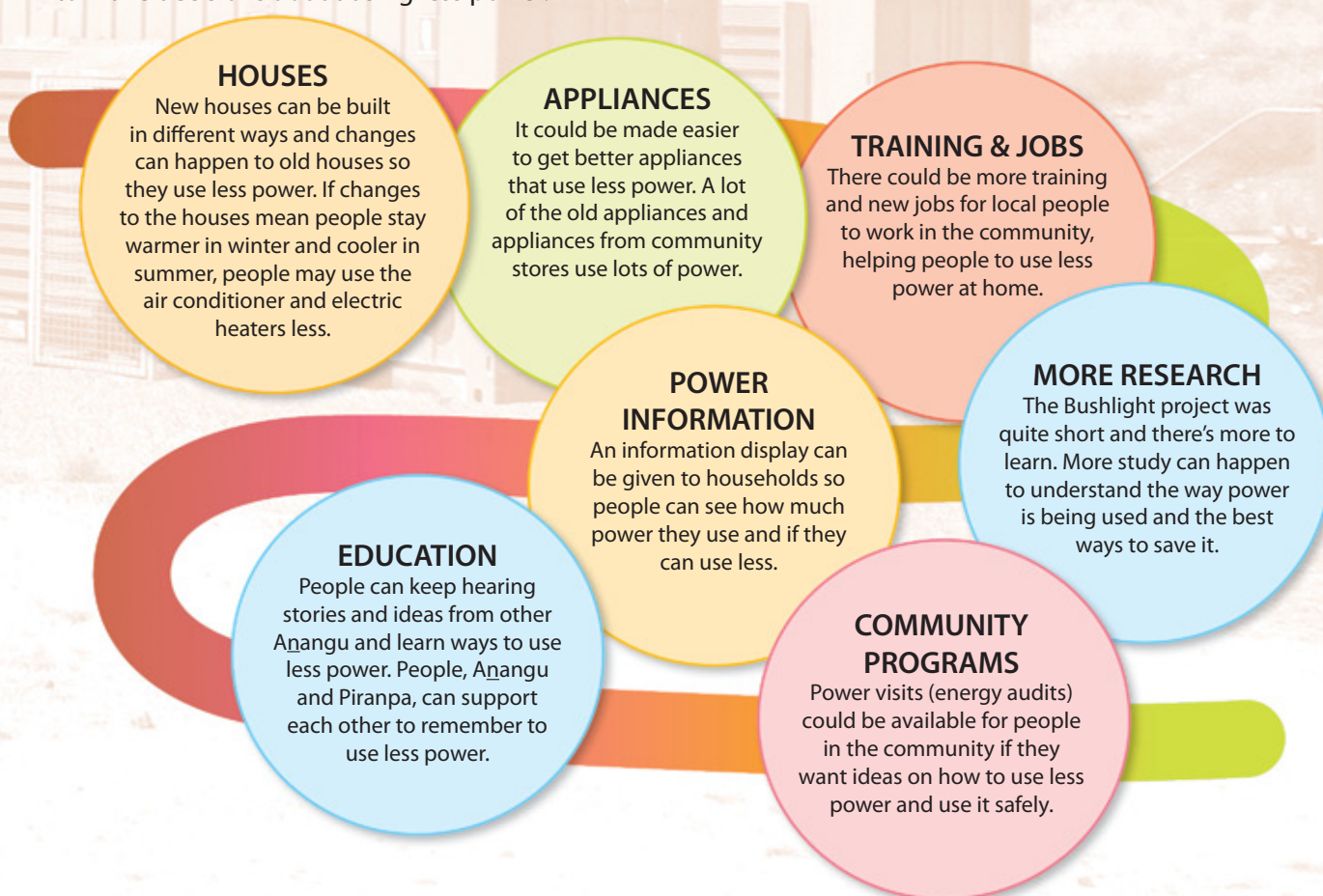


### Power information collected in homes

The story seems to be that people use power differently in each home. People use power in all different ways and at different times. The best next step is for the power provider to keep looking at the power information in the region and look for more stories and patterns. The power information does show that more power is used when it's hot and when it's cold.

### Recommendations: Things that can change so we use less power

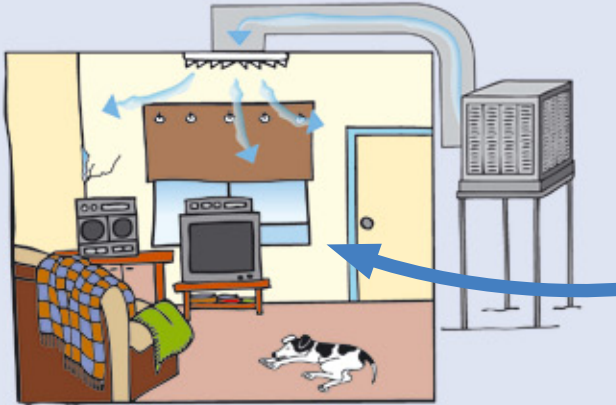
Bushlight is making recommendations to the South Australian Government about ways people can use less power. This means that we are suggesting changes that could happen so people are more informed to make decisions about using less power.





# Ways to save power in the home

As this report has said, there are lots of reasons why power use might be high. But what people have the most control over is how they use power at home and people can continue to do their best to save power. Here are some ways to save power:

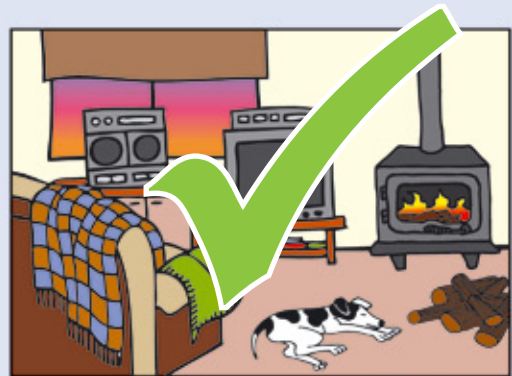


Open the windows a little bit when the air con is on, it means the air con works better and saves power.

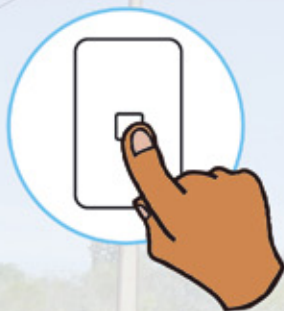
Ovens are dangerous to use as heaters.



Bar heaters use a lot of power and can cause fires.



Stay warm using fires, blankets and warm clothes.



Press the hot water booster once, it takes a while for the water to heat up.



Turn off appliances and lights at the wall when not in use (TV, Kettle, Radio, Microwave oven).



Turn off lights when you're leaving the house.









Bushlight is part of the Centre for Appropriate Technology (CAT).

CAT is an Indigenous organisation that is about using technology in ways that help people live on Country.

For more information go to [www.bushlight.org.au](http://www.bushlight.org.au) or phone (08) 8959 6205

---

#### **Central Australia**

CAT Services Building,  
Desert Peoples Centre Annex,  
via Desert Knowledge Precinct,  
South Stuart Highway,  
PO Box 8044  
ALICE SPRINGS NT 0871  
Tel (08) 8959 6205  
Fax (08) 8959 6111  
[enquiries@bushlight.org.au](mailto:enquiries@bushlight.org.au)

#### **Top End**

7 Searcy Street  
GPO Box 2875  
DARWIN NT 0801  
Tel (08) 8941 2510  
Fax (08) 8981 7233  
[rmtopend@bushlight.org.au](mailto:rmtopend@bushlight.org.au)

#### **Kimberley**

46a Blackman Street  
PO Box 8301  
BROOME WA 6725  
Tel (08) 9192 2355  
Fax (08) 9192 3553  
[rmbroome@bushlight.org.au](mailto:rmbroome@bushlight.org.au)

#### **North Queensland**

Unit 3, First Floor,  
143 Buchan Street  
PO Box 6182  
CAIRNS Qld 4870  
Tel (07) 4031 0505  
Fax (07) 4031 0431  
[rmnq@bushlight.org.au](mailto:rmnq@bushlight.org.au)